


# How do I: Keep Microsoft Security Essentials virus and spyware definitions up-to-date?

Written by Fisnik Hasani, April 5, 2010

The Microsoft® Antimalware group deploys new updates for Microsoft® Security Essentials (MSE) typically a few times daily. Therefore you're not required to check for updates throughout the day, because once MSE checks and finds new updates, the offered updates will automatically be downloaded and added to the virus signature database. However, it is good to sometimes, manually check for updates.

## To manually check for new definition updates

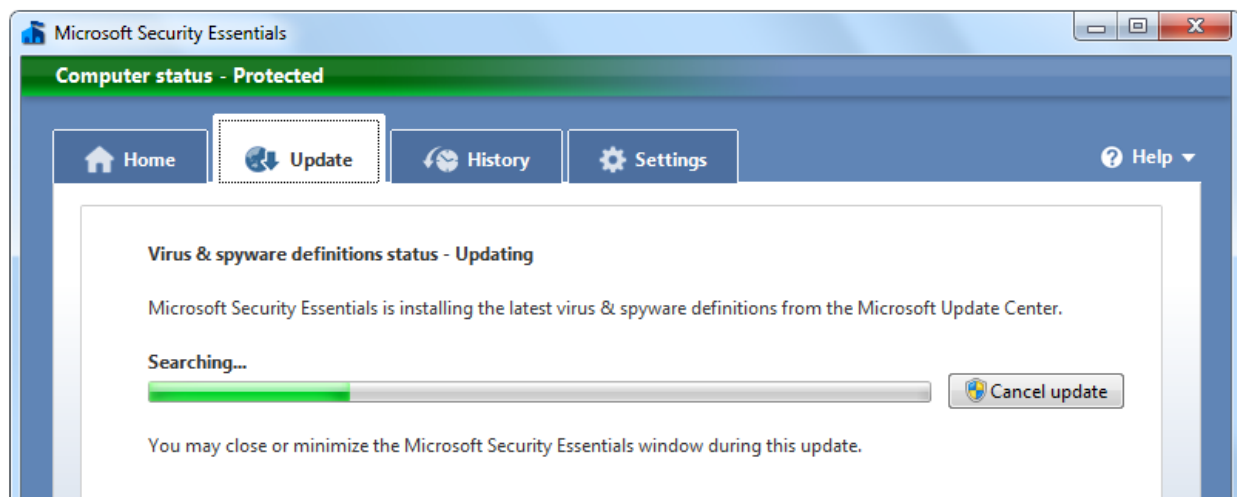
1. To open Microsoft® Security Essentials you must double-click its  icon.
2. Click the **Update** tab.



*Microsoft® Security Essentials has easy tab navigation*

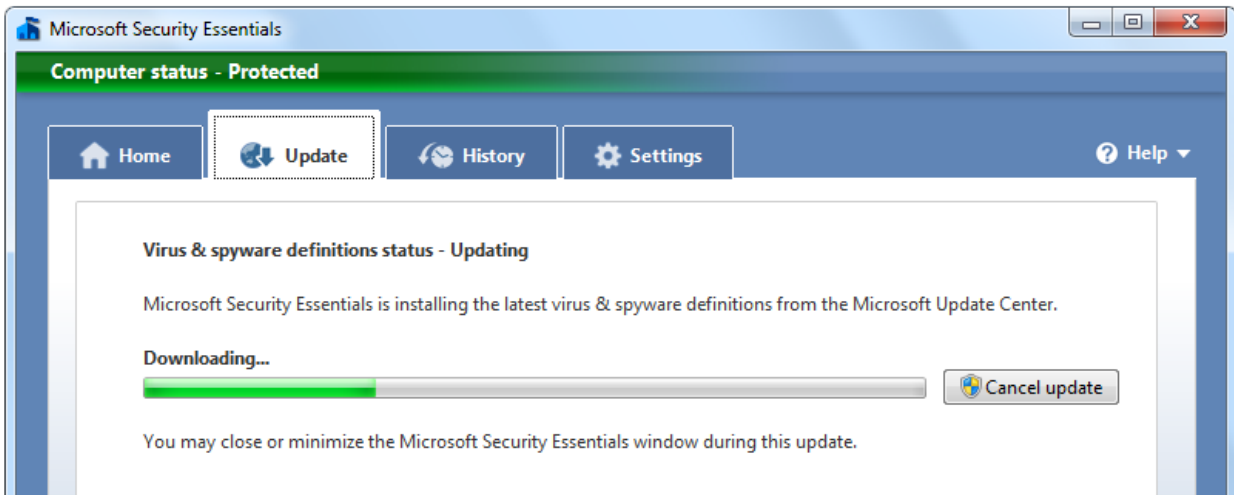
3. Click **Update**.

Microsoft® Security Essentials will check for new updates to download and install.



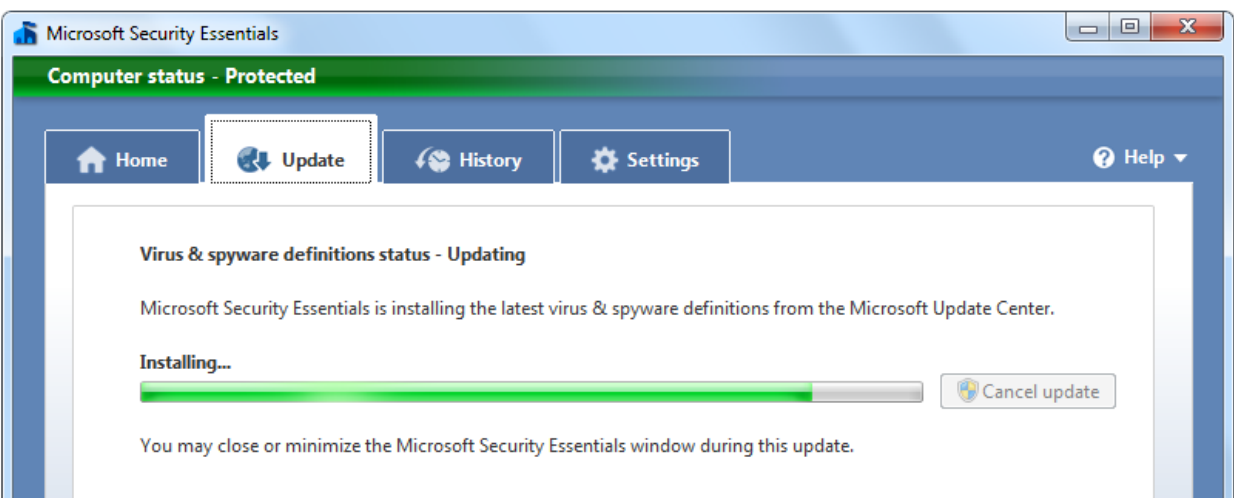
*Microsoft® Security Essentials searching for the latest definition updates*

Once MSE finds new updates, it will download them.



*Microsoft® Security Essentials downloading the latest definition updates*

When MSE has downloaded the latest definition updates, it will install it on the PC.



*Microsoft® Security Essentials installing the latest definition updates*

That's it folks. By following this simple guide you now know how to keep Microsoft® Security Essentials up-to-date manually. We hope that you find this guide helpful.

---

**Fisnik Hasani** is the founder of ITknowledge24.com; he is also an active user helping people by solving different computer problems and other software issues and loves to apply customized ideas when possible. When he doesn't work with programming or computer and software research, he researches and spends time on climate research and energy questions.

---

**Similar questions:** How do I manually check for new definition updates in MSE?  
How to check for new definitions manually? How to check for new definitions manually in Microsoft Security Essentials?

**This guide applies to:** Microsoft® Windows® 7 and Microsoft® Windows Vista® with Microsoft® Security Essentials installed.

For more information visit: <http://www.itknowledge24.com>

Copyright © 2010 ITknowledge24.com. All rights reserved; reproduction in part or in whole without permission is prohibited.

Microsoft, Windows, Windows Server, Windows XP, Windows Vista, Windows 7, Active Directory, Windows PowerShell, Windows Media, and Internet Explorer are either registered trademarks or trademarks of Microsoft Corporation in the United States and/or other countries.

All other trademarks are property of their respective owners.