




How do I: Set up Parental Controls?

Written by Fisnik Hasani, March 27, 2010

To turn on Parental Controls for a Standard User account, follow the simple steps below.

1. Click **Start Menu** and choose **Control Panel**, and click  **User Accounts and Family Safety** and open  **Parental Controls**.

 **Security note:** If UAC is enabled, then you'll get a UAC prompt on screen. Please specify credentials or permission to pass the UAC elevation.

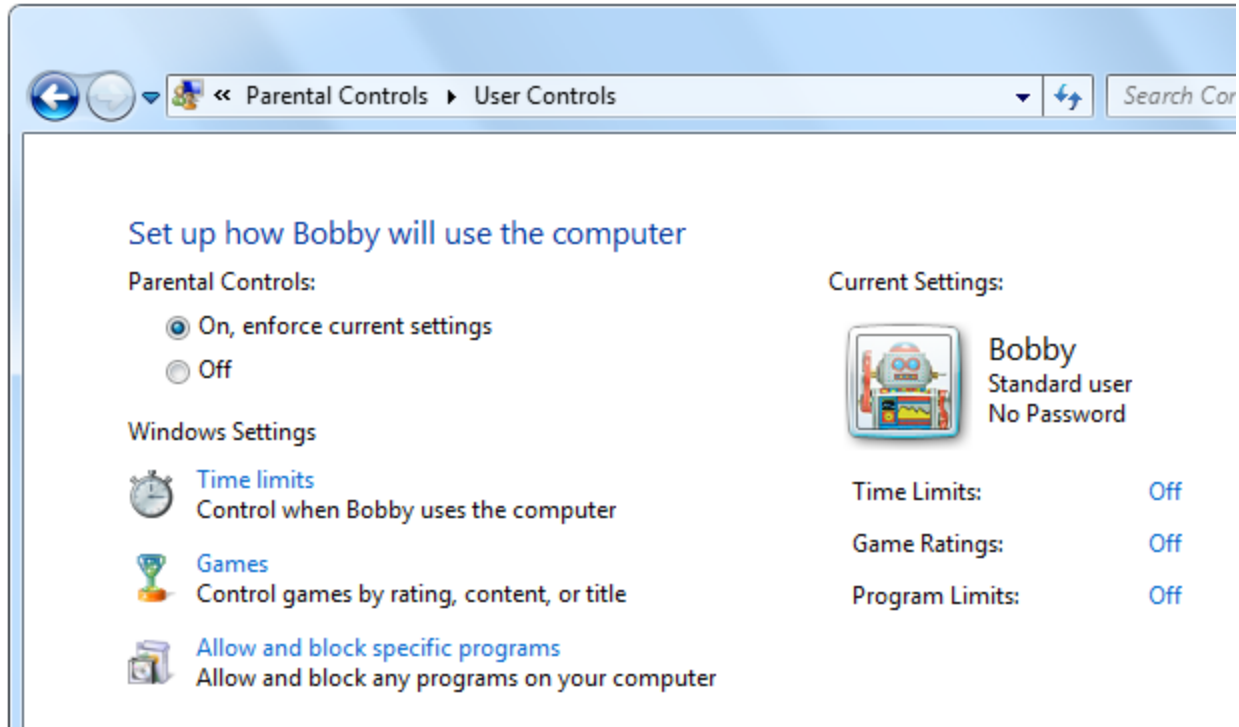
Note: Before you even continue make sure that you have **Standard User** accounts on the PC.

2. Select a user to apply **Parental Control** settings.



Apply Parental Control Settings on Standard User, in this case Bobby


3. Select **On, enforce current settings** and click **OK** to save and apply.





Parental Controls has many different settings that can be applied on the Standard User

4. Select your choice of settings for the specific Standard User in your Personal Computer (PC).

Once you've turned on Parental Controls, you now can adjust three different settings. I will explain each of them below.

 **Time limits:** By enabling this option, you now can set time limits to control when children are allowed to logon to the computer. Using time limits, you can block your child from using the PC during the five regular days when the children go to school, however, during weekends they can use the PC.

 **Games:** If your children play games, and you want to control your child's games and block bad games, then this option is your saver. By enabling Games option you as a parent can control your child's games by rating, content or title. The game ratings system under Parental Controls feature uses the ESRB™ or Entertainment Software Rating Board¹ standards, however, you as a parent still can customize the rating settings.

 **Allow and block specific programs:** If you do not want your children to mess with

¹ The Entertainment Software Rating Board (ESRB) is a non-profit, self-regulatory body established in 1994 by the Entertainment Software Association (ESA), formerly known as the Interactive Digital Software Association (IDSA). ESRB assigns computer and video game content ratings, enforces industry-adopted advertising guidelines and helps ensure responsible online privacy practices for the interactive entertainment software industry. For more details see the ESRB website, <http://www.esrb.org/index-js.jsp>.

something on your computer, then this setting is useful. By enabling this setting, you can prevent your children from running programs that you don't want them to run.

That's it folks. By following this simple guide you can setup Parental Controls in your Windows® 7 environment and keep an eye on your children's computer activities. We hope that you find this guide helpful.

Fisnik Hasani is the founder of ITknowledge24.com; he is also an active user helping people by solving different computer problems and other software issues and loves to apply customized ideas when possible. When he doesn't work with programming or computer and software research, he researches and spends time on climate research and energy questions.

This guide applies to: Microsoft® Windows® 7.

For more information visit: <http://www.itknowledge24.com>

Copyright © 2010 ITknowledge24.com.All rights reserved.

Microsoft, Windows, Windows Server, Windows Vista, Active Directory, Windows PowerShell, Windows Media, and Internet Explorer are either registered trademarks or trademarks of Microsoft Corporation in the United States and/or other countries.

All other trademarks are property of their respective owners.