


# How do I: Turn off Microsoft Security Essentials?

Written by Fisnik Hasani, March 28, 2010

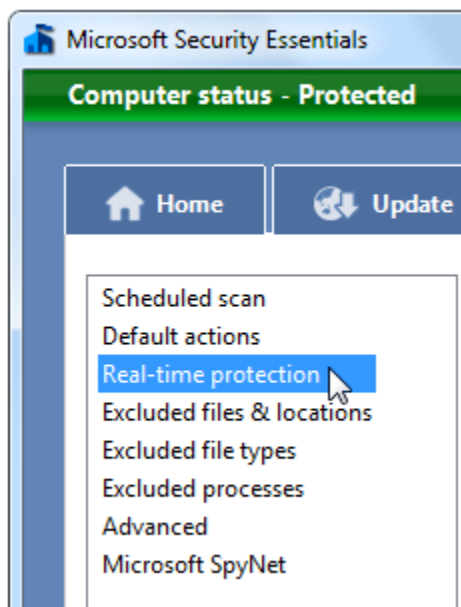
## To turn off Microsoft® Security Essentials

1. To open Microsoft® Security Essentials you must double-click the  icon.
2. Click the **Settings** tab.



*Microsoft® Security Essentials has easy tab navigation*

3. From the left side panel, select **Real-time protection**.




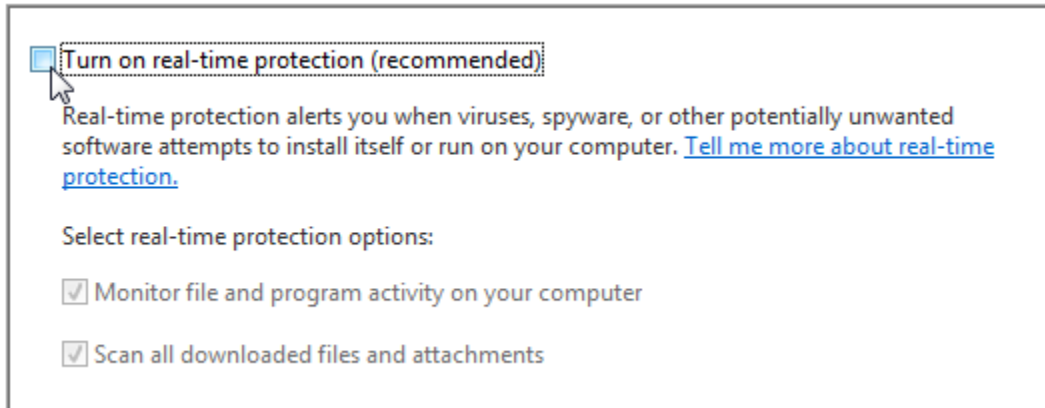
*Good settings category. Easy to select and filter settings, in this case I wanted to focus on the real-time protection settings*

**Security Note:** Do not turn off your antivirus and anti-malware protection software unless you really need. Once you've turned off your antivirus protection, your system will be in high risk of getting infected by virus.


4. From the right-side uncheck the **Turn on real-time protection (recommended)**

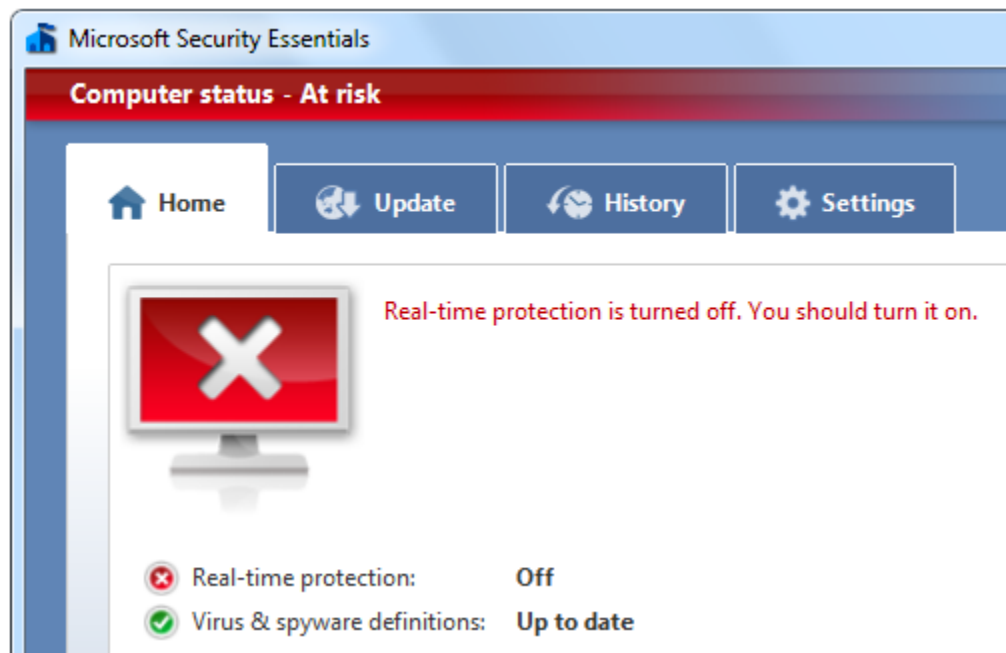
and click on the following  button to save and apply your choice.

 **Security note:** If UAC is enabled, then you'll get a UAC prompt on screen. Please specify credentials or permission to pass the UAC elevation.



*Just uncheck the Turn on real-time protection (recommended) checkbox and click save settings, very easy to turn off*

Once you've clicked **save settings** and passed an UAC prompt elevation, the MSE tray icon will become  red, and the entire software interface will change, warning that real-time it turned off (See image below).



*MSE warning that real-time protection is turned off, very easy to understand*

That's it folks. By following this simple guide you can turn off Microsoft® Security Essentials. We hope that you find this guide helpful.

---

**Fisnik Hasani** is the founder of ITknowledge24.com; he is also an active user helping people by solving different computer problems and other software issues and loves to apply customized ideas when possible. When he doesn't work with programming or computer and software research, he researches and spends time on climate research and energy questions.

---

**Similar questions:** How to pause Microsoft Security Essentials? How can I temporary pause MSE? How do I temporary disable MSE?

**This guide applies to:** Microsoft® Windows® 7 and Microsoft® Windows Vista® with Microsoft® Security Essentials installed.

For more information visit: <http://www.itknowledge24.com>

Copyright © 2010 ITknowledge24.com. All rights reserved; reproduction in part or in whole without permission is prohibited.

Microsoft, Windows, Windows Server, Windows XP, Windows Vista, Windows 7, Active Directory, Windows PowerShell, Windows Media, and Internet Explorer are either registered trademarks or trademarks of Microsoft Corporation in the United States and/or other countries.

All other trademarks are property of their respective owners.